



**CENTURY ROAD CLUB ASSOCIATION**

is pleased to host the

# CRCA orchard beach criterium

This event supported by a grant from the New York State Bicycle Racing Association **NYSBRA**

may 4, 2014  
pelham bay park  
new york city



**#OrchardBeachCrit**

Special Thanks To:

NYC Parks Department

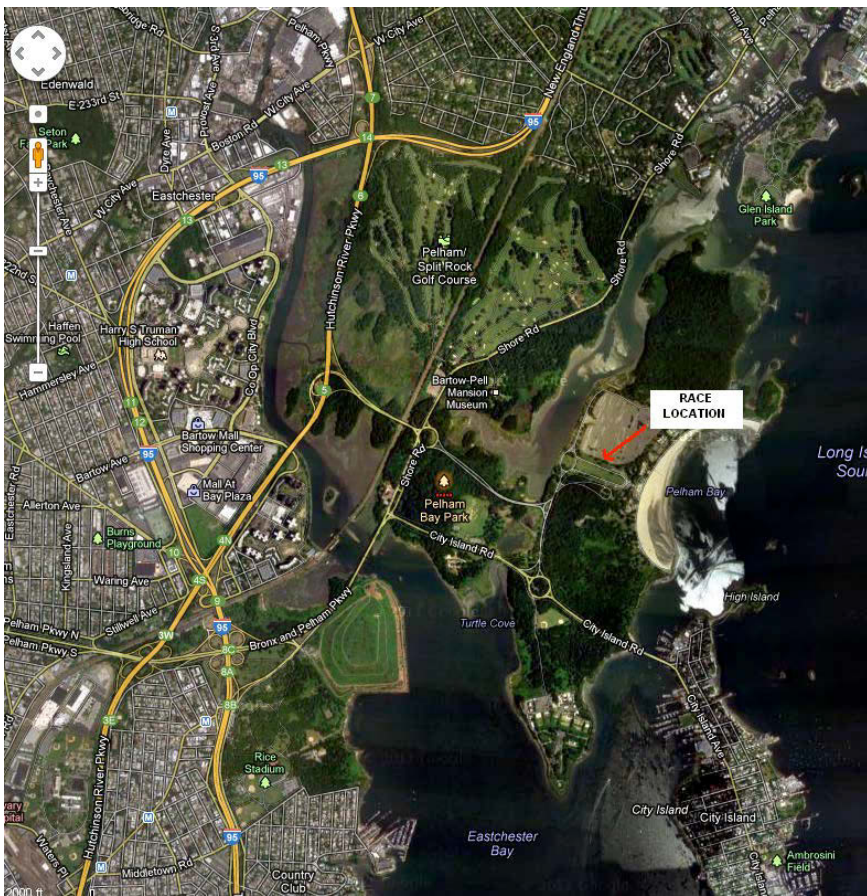
NYPD 45<sup>th</sup> Precinct

## Important Race Notes

- A lot of work has gone into returning bike racing to Orchard Beach and we hope to continue to host future races in Pelham Bay Park. **Please be respectful of the park and other park users throughout the race** – this includes while warming up before and after races. Do not interfere with the flow of traffic or the activities of other park users
- There is no day of registration for the race. All registration must be completed in advance on Bikereg. If you have questions about registration please contact [openracing@crca.net](mailto:openracing@crca.net)
- While we will make every effort to have the Parks Department open the Orchard Beach restrooms prior to the start of racing, we cannot guarantee their availability in the morning – please plan accordingly
- Due to time constraints time between fields will be limited and fields will be staged before the prior race finishes – please see the course map for staging location, listen for announcements and know the race schedule
- If you would like to pre-ride the course please do so before the race prior to yours starts – i.e. the cat  $\frac{3}{4}$  men should pre-ride the course before the cat 4 race begins. Be aware that time between fields is limited and thus a limited window is available to pre-ride the course
- As was the case with the CRCA Grant's Tomb Criterium, neutral support will be provided by SRAM. Officials will provide information on free laps prior to the start of each field. Familiarize yourself with USAC rule 3D4 regarding free laps.
- Due to the course distance it is possible that a break could lap the field – please be aware of the lead moto if a break laps the field and familiarize yourself with USAC rules 3D3 and 3D4
- Officials will give instructions regarding pulled riders during staging – given the distance of the course riders are likely to get pulled so please listen for instructions
- Results for placings 1-10 will be published shortly following the conclusion of each race. Complete results will be published following the completion of the race.
- **Numbers will be pinned on the left side.**

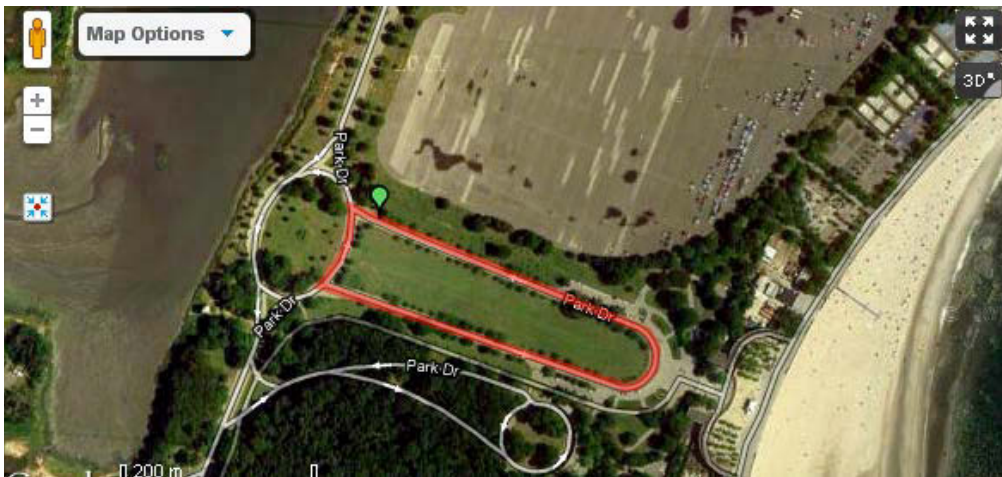
## Race Location and Transportation

- The Orchard Beach Crit and Kids Race course is adjacent to the Orchard Beach parking lot in Pelham Bay Park (see map below)
- The course is accessible via bike, car and subway, but if you are not familiar with Pelham Bay Park please plan your route accordingly
- The Orchard Beach parking lot will be available for parking
- If you are taking the subway one option is to take the 6 train to the Pelham Bay Park station. Please see [www.mta.info](http://www.mta.info) for additional information

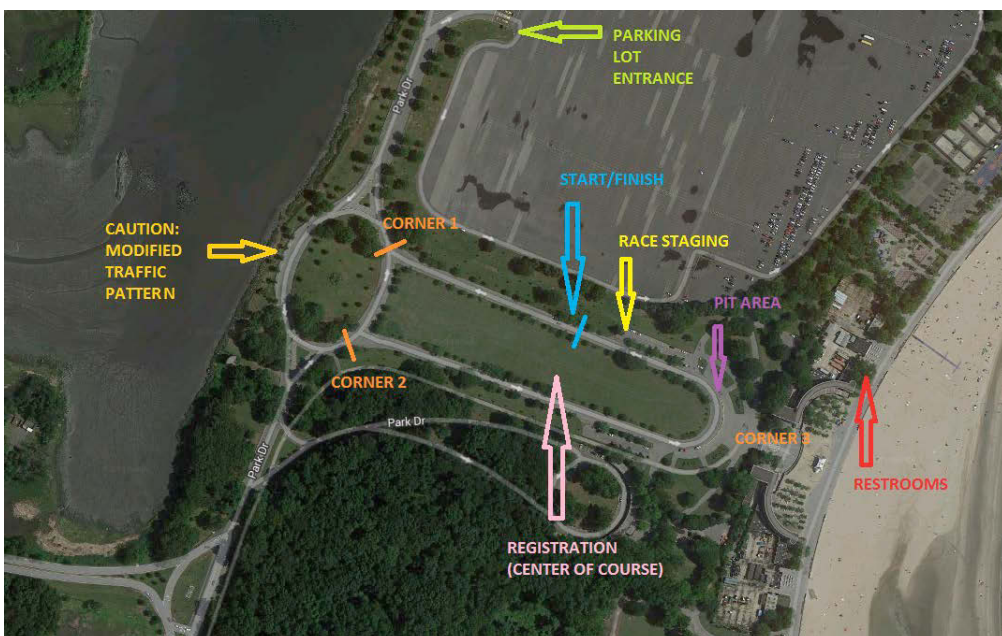


## Race Course

- The course is flat and fast half mile with a sweeping corner on the east end and two sharper corners on the west end. See the course map below and at <http://www.mapmyride.com/routes/view/90400401/>
- The race will run counter clock wise (all corners will be left turns)
- The start / finish line will be located on the north straight away approximately 2/3rds down the straight away (the final corner will be the sweeping turn at the east end of the course)
- Staging will take place in the small parking lot directly off the corner on the northeast portion of the course
- The entire course will be closed to traffic



## Racer Map



## Race Schedule

- Due to time constraints at the venue time between races is extremely limited and we need to remain on schedule.
- Please be aware of your start time and remember that staging will take place shortly before the preceeding race finishes. Stage in the small parking lot immediately adjacent to the northeast corner of the course.
- We encourage racers to spend the day watching other races – Orchard Beach is an incredibly spectator friendly course and the Kids Races should be great fun to watch.
- Note that entry fees increase closer to the race date

| <i>Category</i>                      | <i>Distance</i> | <i>Start</i> | <i>Fee</i> | <i>Prizes</i> | <i>Field Limit</i> |
|--------------------------------------|-----------------|--------------|------------|---------------|--------------------|
| Men Cat 5                            | 30 minutes      | 7:30 AM      | \$40       | Medals        | 75                 |
| Women Cat 4                          | 30 minutes      | 8:05 AM      | \$40       | \$200         | 75                 |
| Men Cat 4/5                          | 40 minutes      | 8:40 AM      | \$40       | \$200         | 75                 |
| Women Cat 3/4                        | 40 minutes      | 9:25 AM      | \$40       | \$400         | 75                 |
| Men Cat 4                            | 45 minutes      | 10:10 AM     | \$40       | \$400         | 100                |
| USAC Juniors 9-18                    | 30 minutes      | 11:00 AM     | \$0        | Medals        | 75                 |
| Men Cat 3/4                          | 50 minutes      | 11:35 AM     | \$40       | \$500         | 100                |
| ELITE WOMEN'S CHAMPIONSHIP (P/1/2/3) | 50 minutes      | 12:30 PM     | \$40       | \$750         | 75                 |
| Men Cat 2/3                          | 60 minutes      | 1:25 PM      | \$40       | \$750         | 100                |
| Kids Races (12 & under)              |                 | 2:30 PM      | \$0        | Medals        | 75                 |
| ELITE MEN'S CHAMPIONSHIP (P/1/2/3)   | 70 minutes      | 3:05 PM      | \$40       | \$1,500       | 100                |
| <b>BIG WHEELS CHARITY RACE</b>       |                 |              |            |               |                    |
| Big Wheels Charity Race              |                 | 12:00 PM     | \$40       |               |                    |

## Kids Races

- The Kids Race will take place at 2:30 PM on the main course.
- **Please arrive at least 30 minutes prior to the events** in order to complete required paperwork and pin race numbers. The event is running on a very tight schedule so it's important that the Kid's races start on time.
- Day of registration is available for the Kids races but we encourage participants to register in advance via Bikereg to simplify the registration process
- 5 & under: 300 yards
- 5 – 6 years old: 1 lap
- 7 – 8 years old: 2 laps
- 9 – 12 years old: 4 laps

## Marshal Map

